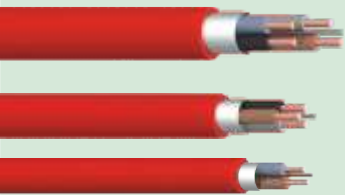


Not Equivalent - Better!

Fire System Cables



2 core, 3 core & 4 cores types available



Conductor Sizes
From 0.50mm² to 4.00mm²

The XP range has been expanded to offer our new XPS Special option - Designed to comply with the varied performance requirements of international fire cable demands.

The XPS Special range is approved & certified by LPCB to meet EN 50200:2006 PH30, BS 6387:2013 Clause 6, 7 & 8 CWZ and EN 60332-1-2:2004 fire standards plus the additional life safety requirements provided by Low Smoke & Zero Halogen emission levels.

Manufactured in the UK by one of the largest 'British Standards' fire cable manufacturers in the World using the latest technology, materials and equipment. All materials and processes are recorded and tracked throughout manufacture to ensure consistent quality. All cables are printed along the entire length with time & date of manufacture and a unique quality assurance batch number for full traceability.

Approved Low Smoke & Zero Halogen Emissions Under Fire Conditions

Also meets EN 60332-1-2:2004

A flame of 1kw of caloric power is applied for 30 seconds. XPS cable self extinguishes leaving the upper cable sheath unaffected showing the cable does not propagate fire.

NoBurn XPS cable cores are twisted during manufacture to provide the highest level of data protection, ideal for long cable runs and analogue addressable fire systems.

The Fastest Fire Cable to Install

SAVE INSTALLATION
TIME & MONEY

Check our Certification at LPCB's
www.redbooklive.co.uk



Features

- Easy to Install and Superb Working Flexibility
- Up to 12 Twists per metre for Data Protection
- Red, White & Black Outer Sheaths Available
- 0.50mm², 0.75mm², 1.00mm², 1.5mm², 2.5mm² & 4.0mm² Conductors
- 100m, 200m, 500m and Special Lengths Available
- Voltage Rating 300v/500v
- Suitable for Zone 1 and Zone 2 Hazardous Area use
- Suitable for many other applications where a Low Smoke & Zero Halogen cable is required
- Supplied on Robust Black Plastic Reels
- ETP1 High Grade Copper
- Core identification following BS 7629: 2008



Manufactured in
United Kingdom



LPCB Ref. No. 682e/01

NoBurn XPS Special range is LPCB approved & certified to the following fire performance & emission tests:-

EN 50200:2006 PH30

• for 30 minutes at 830 °C (up to +40 °C) fire & mechanical shock applied every 5 minutes throughout the 2 hour test.

BS 6387:2013 Clause 6, 7 & 8 CWZ

- C = for 180 minutes (3 hours) at 950 °C (up to ±40 °C) fire only.
- W = for 30 minutes at 650 °C (up to ±40 °C) fire with water spray applied for final 15 minutes.
- Z = for 15 minutes at 950 °C (up to ±40 °C) with fire & mechanical shock applied every 30 seconds throughout the test.

EN 50267-2-1:1999 Zero Halogen Emissions

Emission of less than 0.5% of corrosive & acid gas when under fire conditions.

EN 61034-2:2005 Low Smoke Emission

Meeting at least 60% for residual light transmission while cable is under fire conditions.

Conductor Size	XPS Special with 0.80mm Drain Wire			
	Red Sheath	2 Cores	3 Cores	4 Cores
0.50mm ² = 0.80mm Dia	VXS-205DR	VXS-305DR	VXS-405DR	
0.75mm ² = 0.98mm Dia	VXS-207DR	VXS-307DR	VXS-407DR	
1.00mm ² = 1.13mm Dia	VXS-210DR	VXS-310DR	VXS-410DR	
1.50mm ²	VXS-215DR	VXS-315DR	VXS-415DR	
2.50mm ²	VXS-225DR	VXS-325DR	VXS-425DR	
White Sheath	2 Cores	3 Cores	4 Cores	
0.50mm ² = 0.80mm Dia	VXS-205DW	VXS-305DW	VXS-405DW	
0.75mm ² = 0.98mm Dia	VXS-207DW	VXS-307DW	VXS-407DW	
1.00mm ² = 1.13mm Dia	VXS-210DW	VXS-310DW	VXS-410DW	
1.50mm ²	VXS-215DW	VXS-315DW	VXS-415DW	
2.50mm ²	VXS-225DW	VXS-325DW	VXS-425DW	
Black Sheath	2 Cores	Shown above is the Nominal cross sectional area (πr ²) in mm ² and the diameter in mm of the copper conductor core.		
1.00mm ² = 1.13mm Dia	VXS-210DBK			
1.50mm ²	VXS-215DBK			

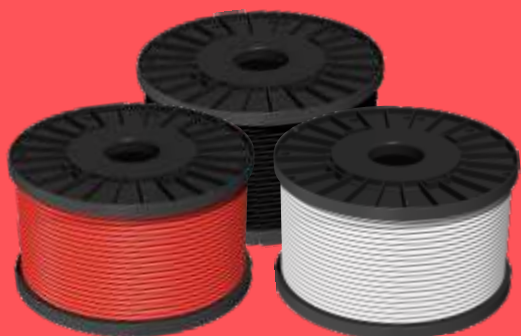
* All cores are solid copper

Other Sizes & Sheath Colours are available

The Fastest Fire Cable to Install

NoBurn XPS is available in a variety of multiple core combinations.

100m, 200m, 500m reels and other special lengths



Supplied On Robust Plastic Reels

- Installer safe and easy handling •
- Better Reeling and damage resistant •
- Weather and moisture resistant •

Manufacturers Recommended Installation Guide Lines

Recommended metal clip spacing 300mm Horizontal
400mm Vertical

Recommended Cable Tray Fastening - Metal Tie,
spacing every 1.5 metres.

Installation Temperatures:

Minimum installation Temperature 0°C
Maximum installation Temperature 70°C

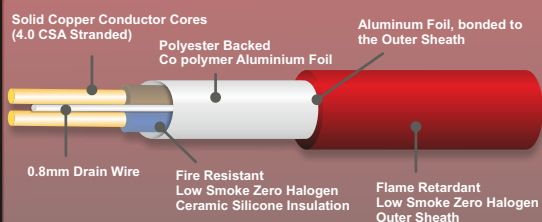
Operating Temperature:

Minimum -40°C to Maximum +90°C.

The cable should not be flexed or bent when either the cable or operating temperature is below the recommended minimum or above the maximum recommended **installation** temperatures.

Minimum Bend Radius = 6 x Diameter

Plastic clips or ties must not be used as the sole means of support for fire cable.



Specifications

LPCB Certified to	Fire Resistance Standard Fire Resistance Standard Halogen Emission Standard Low Smoke Standard	EN 50200:2006 PH30 BS 6387:2013 Clause 6, 7 & 8 CWZ EN 50267-2-1:1999 EN 61034-2:2005		
Materials	Conductors Core Installation Outer Sheath	Plain Annealed Copper Fire Resistant Ceramic Silicone Low Smoke HFFR Materials		
Insulation Colour Code to Working Voltage	Harmonised Core to Core Core to Drain	BS 7629-1:2008 500V 300V 5,000V		
Test Voltage				
Types	Outer Sheath Colours Number of Cores Inner Cores CSA - mm ²	Red, White or Black 2, 3 & 4 Core 0.50, 0.75, 1.0, 1.5, 2.5 & 4.0mm ² Nominal		
Nominal Resistance Maximum (+/- 5%)	0.50mm ² CSA 0.75mm ² CSA 1.00mm ² CSA 1.50mm ² CSA 2.50mm ² CSA	36.2 Ohms / 1 Km 24.6 Ohms / 1 Km 18.1 Ohms / 1 Km 12.2 Ohms / 1 Km 7.50 Ohms / 1 Km		
Minimum Bend Radius	Radius = 6 x Diameter			
Operating Temp. Installation Temp.	Minimum/Maximum Minimum/Maximum	- 40°C to +90°C 0°C to +70°C		
Voltage Drop (DC or Single Phase AC)	0.50mm ² CSA 0.75mm ² CSA 1.00mm ² CSA 1.50mm ² CSA 2.50mm ² CSA	83 Ohms mV / A / m 62 Ohms mV / A / m 44 Ohms mV / A / m 29 Ohms mV / A / m 18 Ohms mV / A / m		
Approximate Overall Diameter	2 Core	0.50mm ² / TBAm		
		0.75mm ² / TBAm		
		1.00mm ² / 6.7mm 1.50mm ² / 6.9mm 2.50mm ² / TBAm		
	3 Core	0.50mm ² / TBAm		
		0.75mm ² / TBAm		
		1.00mm ² / TBAm		
		1.50mm ² / TBAm 2.50mm ² / TBAm		
	4 Core	0.50mm ² / TBAm		
		0.75mm ² / TBAm		
		1.00mm ² / TBAm		
		1.50mm ² / TBAm		
		2.50mm ² / TBAm		
Approximate Weights	2 Core	0.50mm ² TBA Kg / 100 m		
		0.75mm ² 6.9 Kg / 100 m		
		1.00mm ² 7.9 Kg / 100 m		
		1.50mm ² 8.6 Kg / 100 m		
		2.50mm ² 13.5 Kg / 100 m		
	3 Core	0.50mm ² TBA Kg / 100 m		
		0.75mm ² 8.2 Kg / 100 m		
		1.00mm ² 9.3 Kg / 100 m		
		1.50mm ² 12.6 Kg / 100 m		
		2.50mm ² 18.5 Kg / 100 m		
	4 Core	0.50mm ² TBA Kg / 100 m		
		0.75mm ² 8.6 Kg / 100 m		
		1.00mm ² 10.3 Kg / 100 m		
		1.50mm ² 13.8 Kg / 100 m		
		2.50mm ² 21.5 Kg / 100 m		
Current Rating (Current Ratings listed are at 30°C Refer to BS7671/EE Wiring Regulations for de-rating factor.)	Cable Clipped (DC or Single Phase AC)	0.50mm ² TBA		
		0.75mm ² TBA		
		1.00mm ² 15A		
		1.50mm ² 19A		
		2.50mm ² 27A		
	Enclosed (DC or Single Phase AC)	0.50mm ² TBA		
		0.75mm ² TBA		
		1.00mm ² 13A		
		1.50mm ² 16A		
		2.50mm ² 23A		
Capacitance Rating	0.75mm ² CSA	} ~	Core to Core - Average TBA	
				2 Core
				3 Core
	1.5mm ² CSA	} ~	Core to Core - Average 70 pF/m	
				2 Core
				3 Core
	2.5mm ² CSA	} ~	Core to Core - Average 75 pF/m	
				2 Core
				3 Core
		} ~	Core to Core - Average 80 pF/m	
				2 Core
				3 Core
	} ~	Core to Core - Average 85 pF/m		
			2 Core	
			3 Core	
Warranty	Period Identification	10 Years from Date of Manufacture Date of Manufacture Marked On Cable		



Ventcroft Ltd. Faraday Road, Astmoor Industrial Estate, Runcorn, Cheshire, WA7 1PE, United Kingdom. Tel: +44 (0)1928 503500, Fax: +44 (0)1928 581099

www.ventcroft.co.uk

